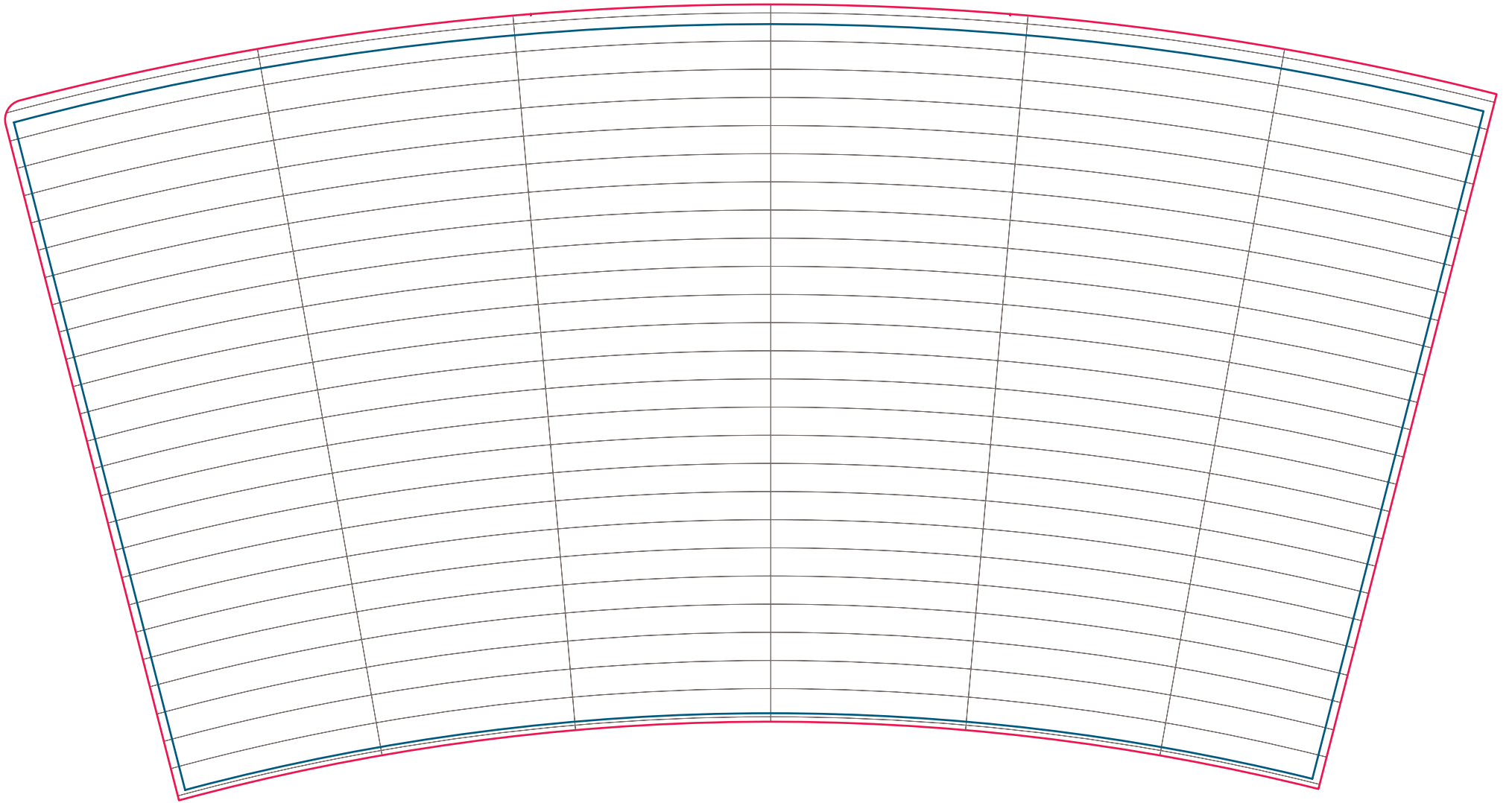


# Template for 16 oz Double Wall Paper Cup



- An exact template provided bellow must be used for the bent layout preparation.
- Layouts are accepted in \*.pdf format.
- Layouts must be in 1:1 scale.
- Only CMYK model colours should be used. The maximum amount of dye per one dot cannot exceed 300 %.
- The resolution of images should not be less than 250 dpi.
- All fonts must be converted into curvilinear objects.
- There should be no objects outside the bleed limit.
- You can find more recommendations how to prepare design file correctly on boldcup.eu site - TEMPLATES section.



Visible area  
Bleed limit  
Help lines

